

# Mt. Fuji

A scenic view of Mount Fuji, a snow-capped mountain, framed by cherry blossom branches in the foreground and a clear blue sky. The mountain is the central focus, with its white snow contrasting against the blue sky. The foreground is filled with the delicate pink and white blossoms of cherry trees, some in sharp focus and others blurred, creating a sense of depth. The water in the foreground is a deep blue, reflecting the sky and the mountain.

By: Jordyn Murtaugh, Ashley Orduna Acosta, Valerie Guilmette, Kiley O'Connor

# Significance of Fuji

- “Its power can demolish the surrounding landscape and kill nearby residence. But its life-giving water provides the source of fertility and rice.”-H.Byron Earheart
- People have relied on Mt.Fuji since ancient times; the groundwater has helped grow crops
- Provides water for agriculture  
and a rich life of plants and animals.



# Sighting Mt. Fuji

- A century ago, 16 hills in Tokyo were categorized as Fujimizaki.
- Thirty-six views of Mt. Fuji By Hokusai .
- Pilgrimage to the mountain (July 1st through late August).
- Climb at night to watch the sunrise.



# What Have We Put On Mt. Fuji?

- Huts provide refreshments, medical supplies, and a place to sleep.
- Hut etiquette:

-Arrive at decent time,

-make sure to take off shoes in correct places,

-be respectful of noises,

-cancel reservations days before  
and show up on time.



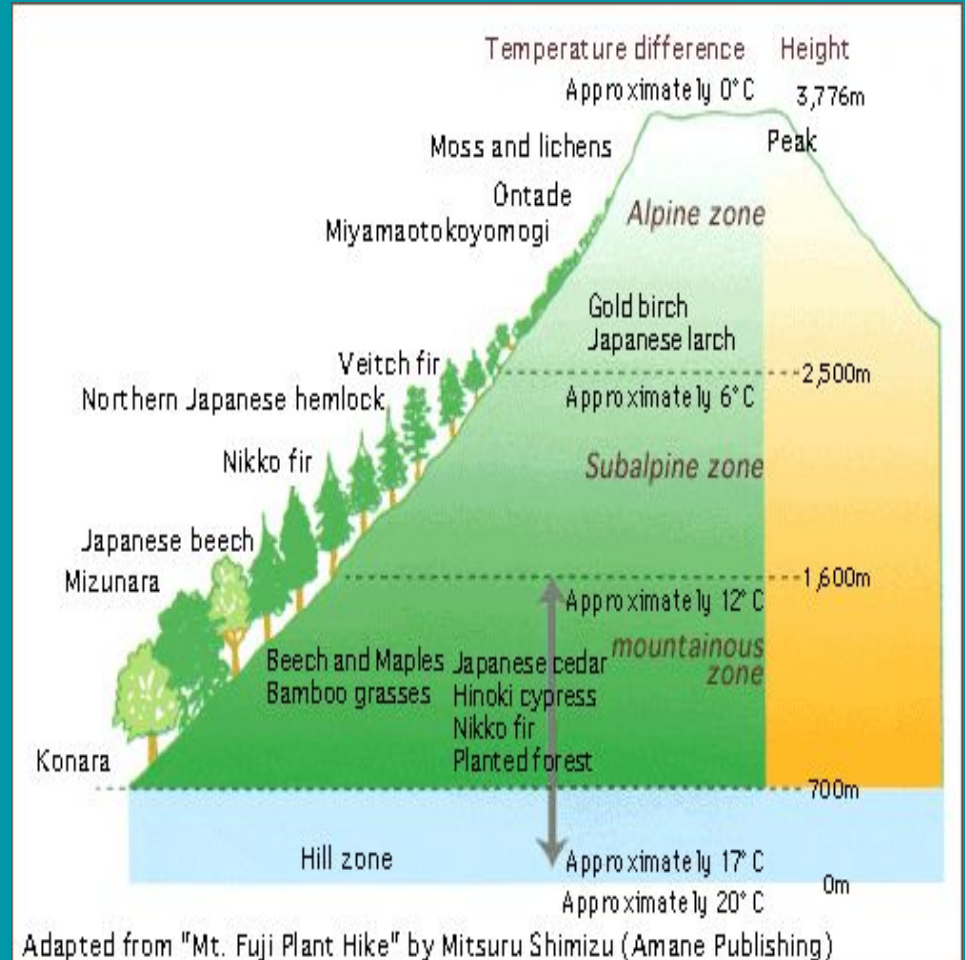
# What Have We Put On Mount Fuji?

- Japanese phone provider, provides free wifi during summer months.
- Vending machines on the mountain.



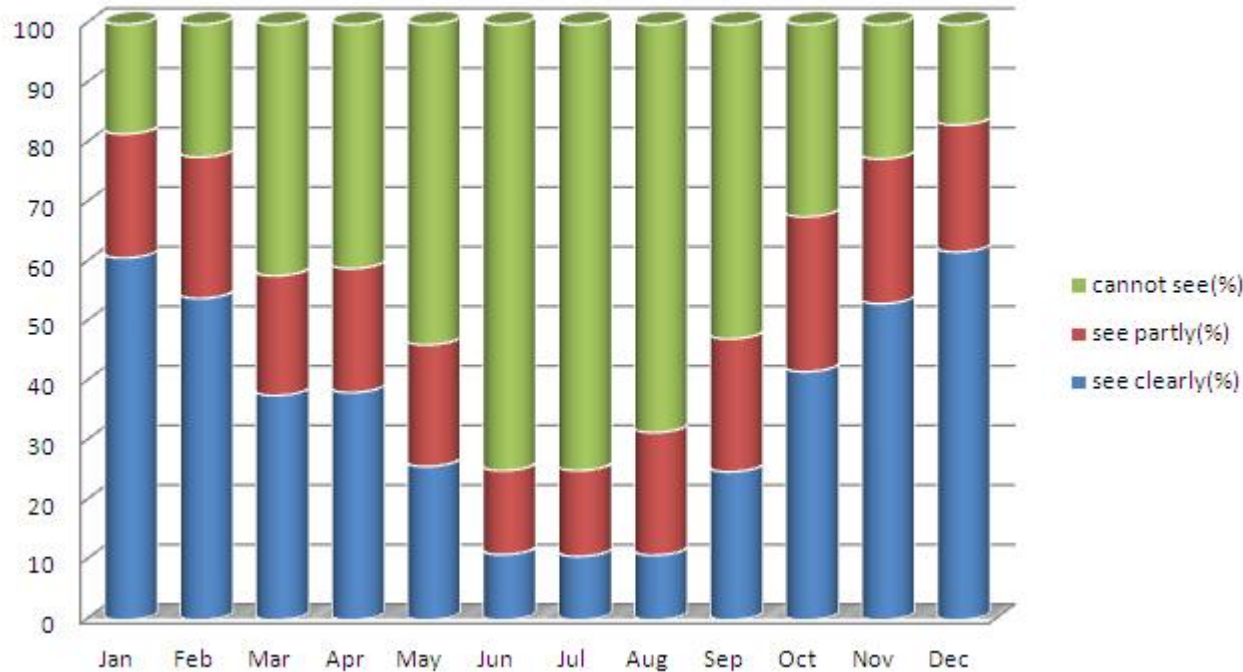
# Mt. Fuji Terrain

1. Alpine Zone
2. Subalpine Zone
3. Mountainous Zone
4. Hill zone



# The Seasons and Mt. Fuji

Mt. Fuji Viewing Percentage



- Summer months bring poor visibility due to the rainy season “tsuyu” where rain is not necessarily heavy, but skies are almost certainly gloomy

- Most Visible during the Winter months

- May - October is typhoon season in Japan, (grey, cloudy skies make for poor visibility)

- Winter time skies are clear and visibility is highest





# Mt. Fuji and the Japanese Aesthetic

**Transience**

**Fragility**

**Seasonality**

ANIMALS



# KAMOSHIKA

- Also known as Japanese Serow
- Protected as a national monument since 1934
- Natural heritage

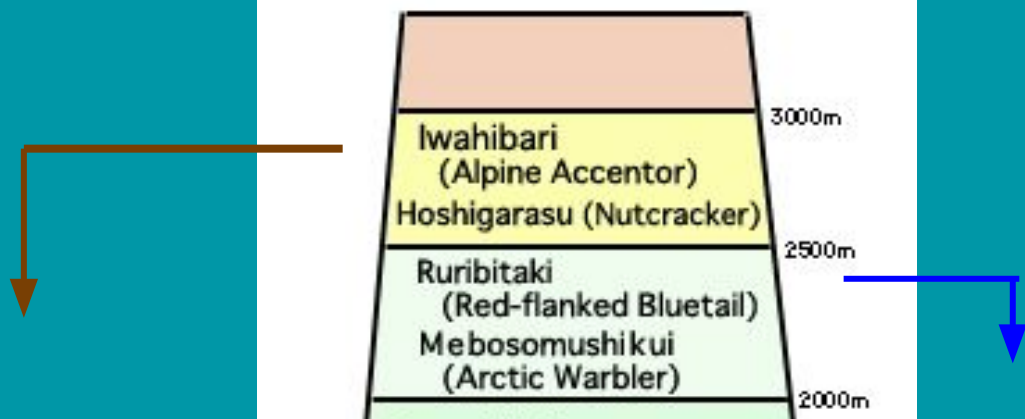
# KAMOSHIKA



# KITSUNE

- Live between the foot of the mountain and the 5th climbing station (2,400 m)
- Inari, Japanese god (Shinto okami) of fertility, rice, agriculture, business, and money





Samebitaki (Siberian Flycatcher) Kikuitadaki (Goldcrest)	
Aobato (White-bellied Green Pigeon) Kibitaki (Narcissus Flycatcher) Toratugumi (Scaly Thrush)	1500m
Fukurou (Ural Owl) Konohazuku (Scops Owl) Sendaimushikui (Eastern Crowned Warbler) Sankouchou (Japanese Paradise Flycatcher) Ooruri (Blue-and-white Flycatcher)	1000m



# World Heritage Site





# Fujisan: Sacred place and Artistic inspiration



And here they all come by the bus load



# Volunteers make an effort



# Scientists and Volunteers deal with invasive species



# Mount Fuji Charter: Rules for Respecting Nature

- Bring back your garbage, pick up other people's
- Bring a portable ashtray
- Don't deviate from trails
- Put a cap on the pole
- Do not bring pets
- Refrain from capturing animals, gathering plants, or sampling rocks
- No graffiti
- Keep the toilets clean
- No idling
- Automobile restriction



# References, Thank you, and Questions

Belson, K. (2013). Mount Fuji, So popular it Hurts. *NYTimes.com*. Retrieved from

Brooke, J. (2003). Volunteers in Japan give Mount Fuji a makeover. *NYTimes.com*. Retrieved from

Numata, R. (2013). Mount Fuji habitats threatened by foreign flora. *JapanTimes*. Retrieved from <http://www.japantimes.co.jp/news/2013/09/15/national/mount-fuji-habitats-threatened-y-foreign-flora/#.WQJmIoWcHIV>

Tey, Y. (14 March, 2011). Explore Mount Fuji. Retrieved from

The MIDORI Press (n.d.). Mt. Fuji: Q&A biodiversity and us. Retrieved from

UNESCO World Heritage Center (2017). Decision: 37 COM 8B.29 Fujisan, sacred place and source of artistic inspiration (Japan). Retrieved from

Mountain Hut Etiquette. (n.d.). Retrieved May 06, 2017, from <https://www.fujimountainguides.com/mountain-hut-etiquette.html>

"Japan's Rainy Season Blues." *Japan Talk*. N.p., n.d. Web. 08 May 2017.

"Travel Japan.jp." *Fujisan / Mt. Fuji | Travel Japan.jp : Introducing You to Japan. Travel Information for Hotel, Ryokan and Culture in Japan*. N.p., n.d. Web. 08

May 2017.